

Bayut.com

For all your property needs

B
a
y
u
t
.c
o
m



Table of Contents

Property Description	3
Contact Details	3
Property Features.....	4
Image Gallery	5
Development	6

Property Description:



2 Beds Apartments

- 2 bedroom.
- D Type.
- Internal Size 1,647 Sq Ft.
- Direct Access To Pool, Gym, and Garden.
- Large terrace.
- Vacant.
- High quality finish.
- Top Quality Gym and pool.
- Developed By Nakheel.
- Reference No: SALE002483.

This stunning 2 bed room D Type apartment with a spacious living area of 2029 sq.ft. The property comprises of 2 good size bedrooms, large living area and with the location of this property being on a lower floor has a large terrace that opens up onto the garden and swimming pool. The Property has not yet been handed over but is fully paid and ready to make an ideal family home.

- **Type** Apartment
- **Status** Property Unavailable
- **Bedrooms** 2
- **Price** 1,999,995 AED
- **Area** 1,647 Sq. Ft.
- **Location** UAE » Dubai » The Palm Jumeirah » Marina Residences

Contact Details:

- **Name** Allsopp & Allsopp (Sales)
- **Phone** +971 4 3237720
- **Fax**
- **Cell**
- **Address**

Property Features:

Main Features

- 24 Hours Concierge
- Balcony or Terrace
- Central Air-Con
- Central Heating
- Double Glazed Windows
- Electricity Backup
- Elevators in Building 4
- Floors in Building 12
- Lobby in Building
- Parking Spaces
- Waste Disposal

Business and Communication

- Broadband Internet
- Intercom
- Satellite/Cable TV

Healthcare and Recreation Facilities

- Jacuzzi
- Kids Play Area
- Sauna
- Steam Room
- Swimming Pool

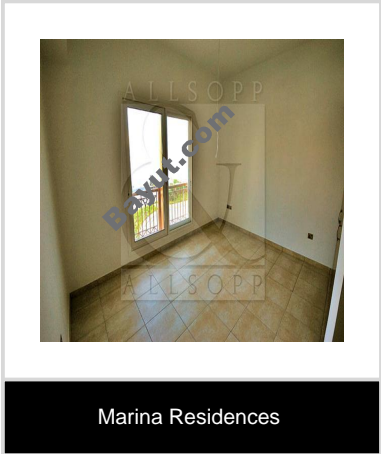
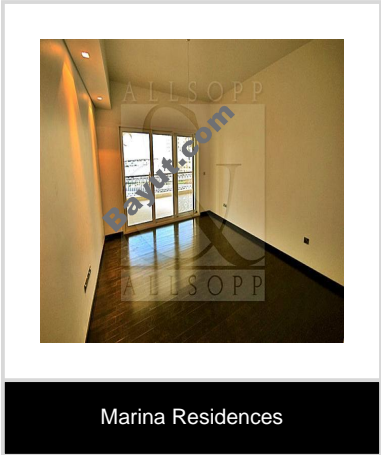
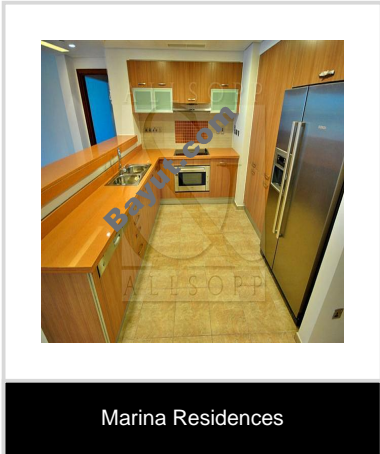
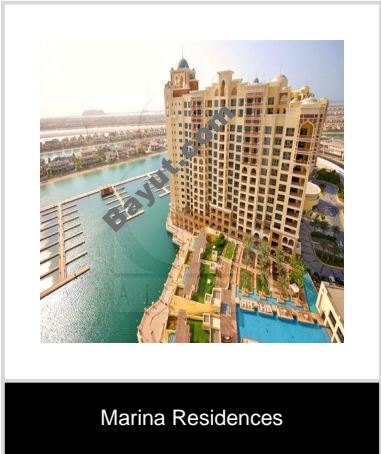
Healthcare and Recreation Facilities in Building

- Gym or Health Club

Other Facilities

- Cafeteria or Canteen
- CCTV Security
- Maintenance Staff
- Security Staff

Image Gallery:



For larger view click link below
http://www.bayut.com/uae_dubai_apartments/marina_residences_2_bedrooms_d_type_apartment_for_sale-534571.html

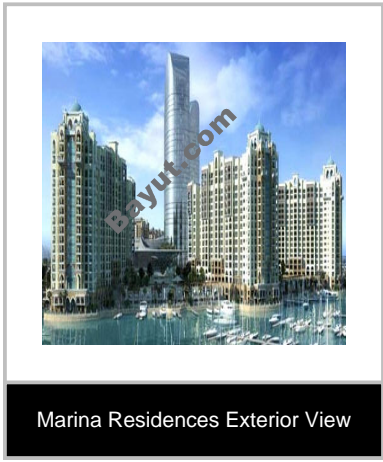
Information About Marina Residences:



Towering above the waves, Marina Residences is situated on the Trunk of the iconic Palm Jumeirah, off the coast of Dubai. This opulent development of 6 freehold high rises is distinctively Arabian in design and colour, yet with the trappings of the glamorous French Riviera or Mediterranean coast; the exclusive playgrounds of the rich & the famous. Ideal for relaxation & entertaining, Marina Residences features elegant two and three bedroom apartments, penthouses & townhouses of exceptional interiors and classic/contemporary finishes. All properties incorporate 'future technology-ready' elements as well as branded appliances. The towers of Marina Residences repose on landscaped podiums to form a 'v' pattern and open into Anchor Marina.

With berths for over 700 vessels, an elegant clubhouse & 5-star yacht facilities, Anchor Marina sets the tone of life at Marina Residences, Dubai. The Palm Jumeirah is beyond doubt, a glittering testimony to the will and vision of the people of Dubai. Often called the 8th wonder of the world, this man-made island has blossomed into a highly coveted and valuable real estate development. Owing to its sheer scale, beauty and innovation, The Palm has caught the fancy of millions worldwide. A property here, especially at the unconventional Marina Residences is certain to be a personal legacy in the generations to come.

➔ Marina Residences Image Gallery:



For larger view click link below
http://www.bayut.com/uae_dubai_apartments/marina_residences_2_bedrooms_d_type_apartment_for_sale-534571.html