

Bayut.com

For all your property needs

B
a
y
u
t
.c
o
m



Table of Contents

Property Description	3
Contact Details	3
Property Features.....	4
Image Gallery	5
Floorplans.....	7
Development	8

Property Description:



1,248 Sq. Ft. Offices

Wooden floor and modified ceiling.

Lake view and low floor.

Saba 1, Jumeirah Lake Towers.

Area: 1248 square feet.

Call now for more details.

Near the Metro station

- **Type** Office
- **Status** Expired
- **Bedrooms** 0
- **Bathrooms** 2
- **Price** 1,123,200 AED
- **Area** 1,248 Sq. Ft.
- **Location** UAE » Dubai » Jumeirah Lake Towers » Saba Tower 1

Contact Details:

- **Name** Akyl
- **Phone** +971-4-3633609
- **Fax** 0097143418834
- **Cell**
- **Address**

Property Features:

Main Features

- 24 Hours Concierge
- Central Air-Con
- Central Heating
- Completion Year 2007
- Double Glazed Windows
- Elevators in Building 6
- Floor 3
- Floors in Building 36
- Freehold
- Land Area 1248
- Lobby in Building
- Parking Spaces
- View lake view
- Waste Disposal

Rooms

- Reception/Waiting Room

Business and Communication

- Broadband Internet
- Conference Room
- Intercom
- Satellite/Cable TV

Healthcare and Recreation Facilities

- Sauna
- Steam Room

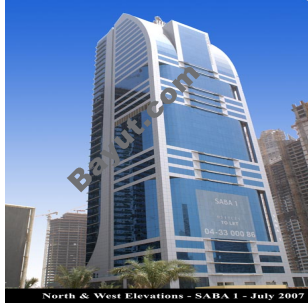
Healthcare and Recreation Facilities in Building

- Gym or Health Club

Other Facilities

- Security Staff

Image Gallery:



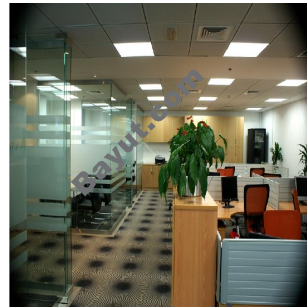
Saba Tower 1 Exterior View 3



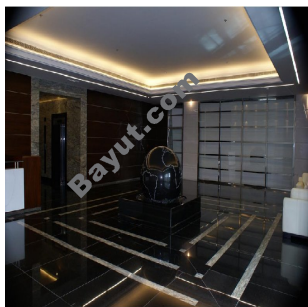
Saba Tower 1 Exterior View 1



Saba Tower 1 Exterior View 2



Saba Tower 1 Office 1



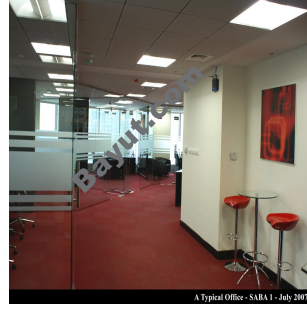
Saba Tower 1 Lobby



Saba Tower 1 Interior View



Saba Tower 1 Office 2

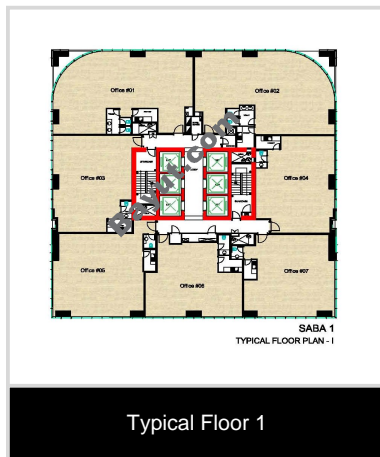


Saba Tower 1 Office 3

For larger view click link below

http://www.bayut.com/uae_dubai_offices/saba_tower_1_office_space_for_sale-468680.html

Floorplans:



For larger view click link below

http://www.bayut.com/uae_dubai_offices/saba_tower_1_office_space_for_sale-468680.html



Information About Saba Tower 1:



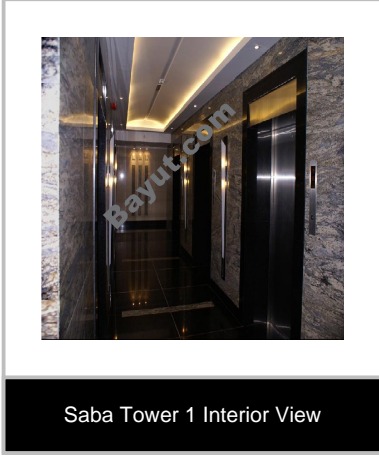
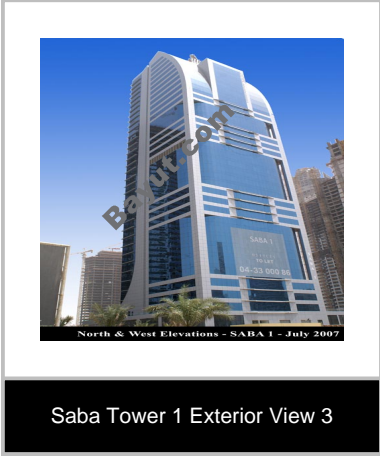
Quality is not a word rather it is an action, it is crucial to our primary objective to have our buildings constructed with the highest quality of workmanship and materials. We strongly believe that quality plays an instrumental role in the real estate industry, as a first-rate quality construction becomes an investment for the future by projecting and spreading a well received reputation for the developer. Moreover, good quality instills in the mind of the client a greater confidence in their investment and ensures a loyal and dependable customer base. The opposite is also true with low quality having a detrimental effect on consumer confidence levels. Excellence is the centrepiece of SABA Properties JLT's objectives in all aspects of our business, and we constantly strive to display excellence in our performance, products and services.

Excellence is an integral part, and the end result of quality, therefore it has a direct effect on our drive for quality. Constructing a tower is the first phase of a long term commitment and commences when the construction is complete, it will last as long as the product life cycle, whilst in actuality it preserves the quality and excellence that has been imbedded into the finished product. Maintenance retains and prolongs the assets value therefore it directly affects investor's equity. Delivery on commitments by business entities is the core of all business transactions, without which objectives are not met and investments are eroded. Quality, excellence and maintenance are intensely effective when and if they actually take place on a timely basis. Commitments are the most detrimental factor in making or breaking a business entity.

Therefore in SABA Properties JLT meeting and delivering on our commitments are the driving forces behind all of our strategies and consequently have the highest priorities in our devising of goals and objectives. Saba 4 will be an envisaged 47 storey office to be built on a larger than normal plot in JLT. This plot, BB3, is located on the border of JLT and Jumeriah Islands and the tower will be modelled after the prestigious Emirates Towers with very exclusive features and concepts attached to it. Plot size is 54,596 sq ft, total built up area is more then 1,100,000 sq ft, more than 104 office units, office sizes ranging from 2900 sq ft – 13,604 sq ft, more

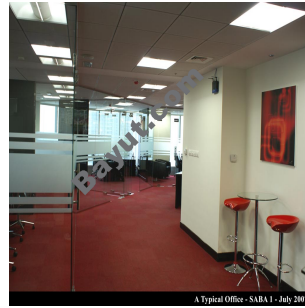
than 20,000 sq ft of retail area, building Heights including Architectural Roof Feature : 221.95 m. This office tower will be sold to exclusive end users and provides the clients with an entire floor, 2 separate wings per floor, or 4 offices per floor options. The design of the Tower is already approved, And the construction of SABA-4 will commence shortly.</div>

➤ Saba Tower 1 Image Gallery:

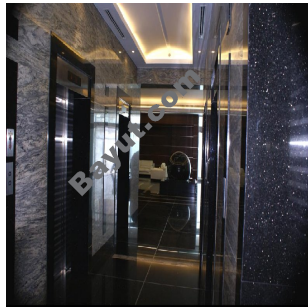




Saba Tower 1 Office 2



Saba Tower 1 Office 3



Saba Tower 1 Interior View

For larger view click link below

http://www.bayut.com/uae_dubai_offices/saba_tower_1_office_space_for_sale-468680.html