

Bayut.com

For all your property needs

B
a
y
u
t
.c
o
m



Table of Contents

Property Description	3
Contact Details	3
Property Features.....	4
Image Gallery	5
Development	6

Property Description:



4 Beds Villas

This 4 bedroom Garden Villa has spectacular beach views and 5000 square feet of living space! Exclusive private beach access, live in one of the most exclusive addresses in the world! Property is vacant so view today! The Central Rotunda style provides the property with an abundance of natural light that enters via a Rotunda in the centre. The Rotunda offers a really nice feature.

- **Type** Villa
- **Status** Property Unavailable
- **Bedrooms** 4
- **Price** 8,485,000 AED
- **Area** 5,000 Sq. Ft.
- **Location** UAE » Dubai » The Palm Jumeirah » Garden Homes Palm Jumeirah » Central Rotunda Mediterranean

Contact Details:

- **Name** Massoud Taheri
- **Phone** +971-4-395 0922
- **Fax**
- **Cell**
- **Address**

Property Features:

Main Features

- Balcony or Terrace
- Central Air-Con
- Double Glazed Windows
- Freehold
- Furnished
- Land Area 5000 to 6000 square
- Lobby in Building
- Parking Spaces Two Garage
- View Water View
- Waste Disposal

Rooms

- Maids Room
- Study Room

Business and Communication

- Broadband Internet
- Intercom
- Satellite/Cable TV

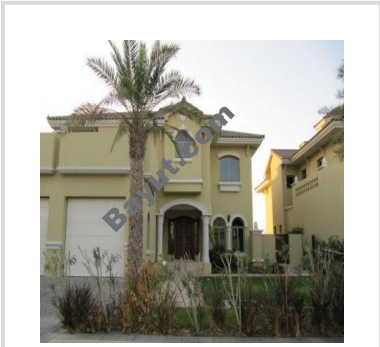
Healthcare and Recreation Facilities in Building

- Other Facilities Finest Marble with borders of inset mosaics and mahogany skirting, Mahogany framed doors with solid timber panels, fitted with carved panels and etched glass, Recessed down lights on dimmers, wall sconces in stairs and cloakrooms, additional fixings and power provided for chandeliers, Roca & Grohe bathroom fittings used in all bathrooms, Poggenpohl cabinets with dark Chesnut paneled doors, Miele kitchen fittings, High quality decorative wall lights and mirrors
- Swimming Pool

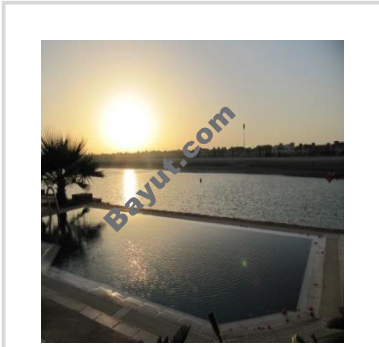
Other Facilities

- Security Staff

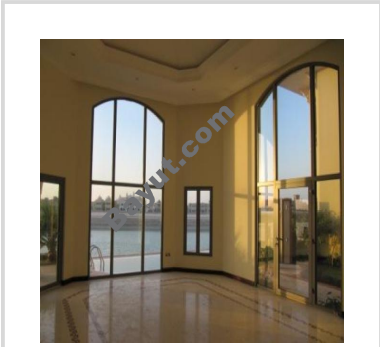
Image Gallery:



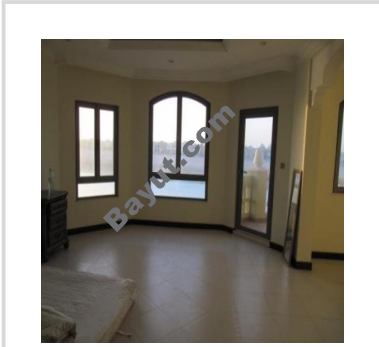
Garden Home



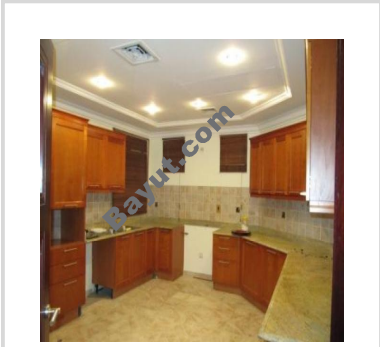
Private Beach



Interior view



Interior view



Kitchen

For larger view click link below

http://www.bayut.com/uae_dubai_villas/central_rotunda_mediterranean_4_bedrooms_villa_for_sale-468457.html

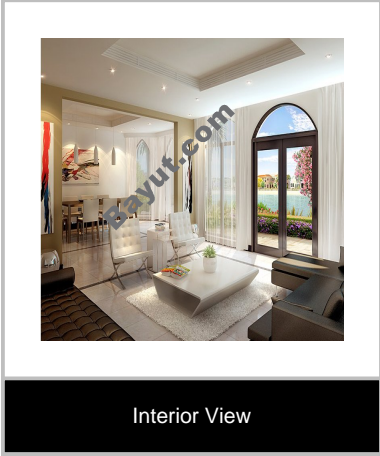
Information About Central Rotunda Mediterranean:



Garden Villas are offered along the 'Trunk' of The Palm. They give home-owners between 5,000 and 6,000 square feet of living space, along with private pools and stunning water views. With private health clubs and extraordinary entertainment options nearby, these are the most bespoke family homes and holiday retreats in the world. Garden Homes on The Trunk of The Palm feature stunning water views and close proximity to unprecedented entertainment options. Experience the ultimate in choice, with myriad themes and a variety of floor plans to select from. Then go beyond the amenities and comfort of your home to choose among restaurants, shopping, aquariums, and diverse activities and their themes are Arabic, Mediterranean, Santa Fe and Greek. Similar to the Signature Villas the Garden Homes are situated on the fronds of The Palm along side the Signature Villas and close to the Town Houses. Again homeowners of these villas were offered a variety of architectural styles and themes to choose from which were inspired by the different cultures around the world.

In a nut shell the Palm offers beachfront ocean-views properties, unlike any other property in the world, with state-of-the-art amenities and facilities. A once in a life time investment opportunity. Four, Five or Six Bedroom Villas Three level Structure - Ground + 2 Levels. Some Garden Homes have extra rooms. Private Garage for two cars. Individual Swimming Pool Private gardens with hardscaping and landscaping installed, Water views and exclusive beaches, High-speed internet connection, State of the art Cable TV and telecommunication, High quality marble flooring and door finishes Wooden Walk-in closets, Insulated double glazed windows Fitted out kitchen with quality cabinets, tiling, stainless steel sinks, granite table tops and ample electrical points for kitchen appliances Marble flooring and walls Granite tops Ceramic sanitary ware with matching accessories, Mirrors with vanity lights Glass showers enclosures.

➔ Central Rotunda Mediterranean Image Gallery:



For larger view click link below
http://www.bayut.com/uae_dubai_villas/central_rotunda_mediterranean_4_bedrooms_villa_for_sale-468457.html