

# Bayut.com

For all your property needs

B  
a  
y  
u  
t  
.c  
o  
m



# Table of Contents

Property Description .....	3
Contact Details .....	3
Property Features.....	4
Image Gallery .....	5
Development .....	7

## Property Description:



### 6 Beds Villas

Exclusive property is now available for sale Signature Villa Central Gallery grand courtyard Mediterranean style good number atlantis facing 6 bedrooms plus maid's double garage 7000 square feet plot size.

- **Type** Villa
- **Status** Property Unavailable
- **Bedrooms** 6
- **Price** 18,000,000 AED
- **Area** 13,000 Sq. Ft.
- **Location** UAE » Dubai » The Palm Jumeirah » Signature Villa Central Gallery

## Contact Details:

- **Name** The Specialists Real Estate
- **Phone** +971-4-329 5959
- **Fax**
- **Cell**
- **Address**

## Property Features:

### Main Features

- 24 Hours Concierge
- Balcony or Terrace
- Central Air-Con
- Completion Year 2008
- Double Glazed Windows
- Electricity Backup
- Lobby in Building
- Parking Spaces
- Waste Disposal

### Rooms

- Laundry Room
- Reception/Waiting Room
- Storage Areas
- Study Room

### Business and Communication

- Broadband Internet
- Intercom
- Satellite/Cable TV

### Healthcare and Recreation Facilities

- Barbeque Area
- Lawn or Garden
- Swimming Pool

### Healthcare and Recreation Facilities in Building

- Gym or Health Club

### Other Facilities

- Facilities for Disabled
- Other Facilities Beauty parlours, barber salons, tailors.
- Security Staff

Image Gallery:



Signature Villa Central Gallery Exterior View



3920\_Image



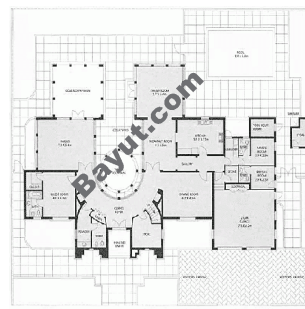
3921\_Image



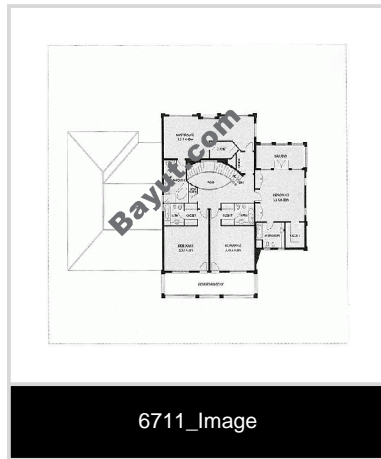
3924\_Image



3925\_Image



6710\_Image



For larger view click link below

[http://www.bayut.com/uae\\_dubai\\_villas/signature\\_villa\\_central\\_gallery\\_villa\\_for\\_sale-466783.html](http://www.bayut.com/uae_dubai_villas/signature_villa_central_gallery_villa_for_sale-466783.html)



## Information About Signature Villa Central Gallery:



Every Signature villa on The Palm features a private beach and swimming pool to complete an experience of exclusivity and luxury. Modern amenities and ocean views make your dream home a reality. Offering homes inspired by international architecture, The Palm provides buyers with a variety of designs and styles, giving residents the opportunity to make The Palm their own.

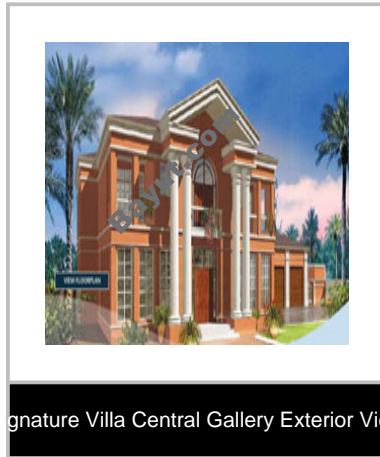
Homes: Stunning water views from all homes, Homes designed by international architects with choice of layouts and styles, Family living in a secure environment, Designer selected interior finishes in a choice of three colour schemes, Ceramic floor tiles-marble/wooden optional, Solid core entry door with security view hole, Walk in closets with shelves and wooden doors, Insulates, double-glazed windows, Tiled balconies, Distinctive overhead lighting. Highest quality kitchen cabinetry with choice of design and finish, Selected granite tops, Ceramic tiled splash backs, Ceramic floor tiles, Twin bowl stainless steel sink with quality mixer tap, Space and services provided for major appliances, Track lighting. Choice of quality vanities with granite tops, Ceramic tiled flooring and walls, Selected ceramics, Sanitary ware with matching accessories, High mirrors and vanity lighting, Ceramic accessory package to match bathroom design, Safety glass shower enclosures, High quality mixer taps.

High-speed internet access with "future technology ready" features, Homes ready for cable TV and telephones, Homes ready for state of the art security system, 24-hour water patrol, High quality switches and outlets. Private covered garage for two cars, Remote controlled ready garage doors, Individual swimming pool, Water views and exclusive private beaches, Private gardens with "hardscaping" installed, Paved drive-in for homes. Marina clubhouse with pool, gymnasium available to Villa and Canal Cove Town homes residents, Access to club for nominal fee. The village Centre, conveniently located near the Shoreline Apartments will be fully equipped with supermarkets, laundry, beauty parlours, barber salons, tailors and all other services required for daily living. The Signature Villas on The Palm offer home-owners the exceptional choice of four distinct styles of architecture, inspired by diverse cultures and all featuring state-of-the-art amenities, a private beach and breathtaking ocean

views.</div>



## Signature Villa Central Gallery Image Gallery:



Signature Villa Central Gallery Exterior View

For larger view click link below

[http://www.bayut.com/uae\\_dubai\\_villas/signature\\_villa\\_central\\_gallery\\_villa\\_for\\_sale-466783.html](http://www.bayut.com/uae_dubai_villas/signature_villa_central_gallery_villa_for_sale-466783.html)