

Bayut.com

For all your property needs

B
a
y
u
t
.c
o
m



Table of Contents

Property Description	3
Contact Details	3
Property Features.....	4
Image Gallery	5
Floorplans.....	6
Development	7

Property Description:



6 Beds Villas

Good location; P Frond; Amazing Marina view; Vacant on transfer; Modified internally; Landscaped Gardens; Private pool and beach; Highest Quality; Perfect Family Home; Viewing Recommended; For viewings call Darren +971509572368. The Great Rotunda is a larger version of the popular Garden Home style the central Rotunda. The Rotunda provides the property with an abundance of natural light that enters via a Rotunda in the centre of the property. With the Rotunda the main feature point of the Villa with each downstairs room entering from the Rotunda it offers a really nice feature..... This particular Villa is located on Frond P. It is an odd number so takes advantage of the stunning Marina skyline views, especially in the evenings. The Villa is well maintained throughout and has many internal modifications, including its own private Bar area; on the first floor the Rotunda area has been filled in creating a large open plan family area. The Garden is well maintained; this Villa needs no work at all and is in perfect condition. Currently on short term lets and a cash seller; this Villa is easily viewable and must be seen! Call Darren Today for more information: +971561491931 Allsopp & Allsopp Real Estate Brokerage LLC Residential Sales; Residential Leasing; International Sales Head Office Tel: +971 (4) 3444880 Head Office Fax: +971 (4) 3444881 Email: Info@allsoppandallsopp.com Website: http://www.allsoppandallsopp.com Head Office Address: Villa No.7, 160b Al Wasl Road, Jumeira, Dubai, UAE RERA Office Registration Number: 1815 ISO 9001: 2008 Certified

- Type: Villa
Status: Property Unavailable
Bedrooms: 6
Price: 16,000,000 AED
Area: 7,000 Sq. Ft.
Location: UAE » Dubai » The Palm Jumeirah » Signature Villa Great Rotunda

Contact Details:

- Name: Allsopp & Allsopp (Sales)
Phone: +971 4 3237720
Fax:
Cell:
Address:

Property Features:

Main Features

- 24 Hours Concierge
- Balcony or Terrace
- Central Air-Con
- Completion Year 2008
- Double Glazed Windows
- Lobby in Building
- Parking Spaces
- View A private beach and breathtaking ocean views.
- Waste Disposal

Rooms

- Laundry Room

Business and Communication

- Broadband Internet
- Intercom
- Satellite/Cable TV

Healthcare and Recreation Facilities

- Swimming Pool

Healthcare and Recreation Facilities in Building

- Gym or Health Club

Other Facilities

- Other Facilities Beauty parlours, barber salons, tailors.
- Security Staff

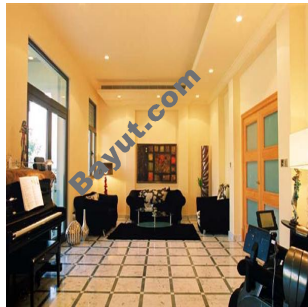
Image Gallery:



Signature Villas View



Interior View



Interior View



Interior View

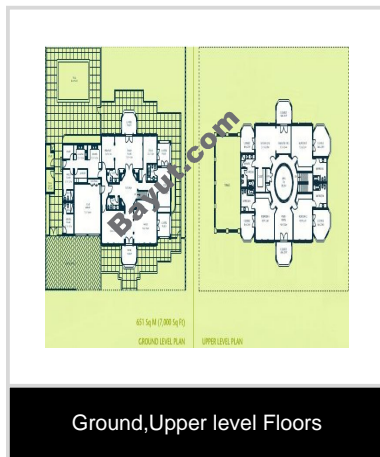


Interior View

For larger view click link below

http://www.bayut.com/uae_dubai_villas/signature_villa_great_rotunda_beautiful_modified_villa_with_amazing_marina_view_-448680.html

► Floorplans:



For larger view click link below

http://www.bayut.com/uae_dubai_villas/signature_villa_great_rotunda_beautiful_modified_villa_with_amazing_marina_view_-448680.html

Information About Signature Villa Great Rotunda:



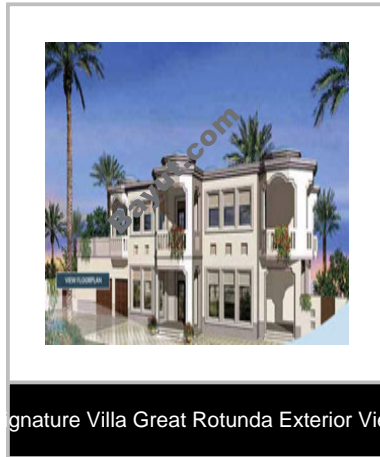
Every Signature villa on The Palm features a private beach and swimming pool to complete an experience of exclusivity and luxury. Modern amenities and ocean views make your dream home a reality. Offering homes inspired by international architecture, The Palm provides buyers with a variety of designs and styles, giving residents the opportunity to make The Palm their own. Stunning water views from all homes, Homes designed by international architects with choice of layouts and styles, Family living in a secure environment, Designer selected interior finishes in a choice of three colour schemes, Ceramic floor tiles-marble/wooden optional, Solid core entry door with security view hole, Walk in closets with shelves and wooden doors, Insulates, double-glazed windows, Tiled balconies, Distinctive overhead lighting. Highest quality kitchen cabinetry with choice of design and finish, Selected granite tops, Ceramic tiled splash backs, Ceramic floor tiles, Twin bowl stainless steel sink with quality mixer tap, Space and services provided for major appliances, Track lighting. Choice of quality vanities with granite tops, Ceramic tiled flooring and walls, Selected ceramics.

Sanitary ware with matching accessories, High mirrors and vanity lighting, Ceramic accessory package to match bathroom design, Safety glass shower enclosures, High quality mixer taps. High-speed internet access with "future technology ready" features, Homes ready for cable TV and telephones, Homes ready for state of the art security system, 24-hour water patrol, High quality switches and outlets. Private covered garage for two cars, Remote controlled ready garage doors, Individual swimming pool, Water views and exclusive private beaches, Private gardens with "hardscaping" installed, Paved drive-in for homes. Marina clubhouse with pool, gymnasium available to Villa and Canal Cove Town homes residents, Access to club for nominal fee. The village Centre, conveniently located near the Shoreline Apartments will be fully equipped with supermarkets, laundry, beauty parlours, barber salons, tailors and all other services required for daily living. The Signature Villas on The Palm offer home-owners the exceptional choice of four distinct styles of architecture, inspired by diverse cultures and all featuring state-of-the-art amenities, a private beach and breathtaking ocean

views.</div>



Signature Villa Great Rotunda Image Gallery:



For larger view click link below

http://www.bayut.com/uae_dubai_villas/signature_villa_great_rotunda_beautiful_modified_villa_with_amazing_marina_view_-448680.html