

Bayut.com

For all your property needs

B
a
y
u
t
.c
o
m



Table of Contents

Property Description	3
Contact Details	3
Property Features.....	4
Image Gallery	5
Development	6

Property Description:



5 Beds Villas

Enchanting 5 bedrooms villa is available for sale in Garden Home on the Palm Jumeirah, it is Atrium Entry 2 and offers a breathtaking full view of the Atlantis with built up area size of 6000 square feet and has a generous plot area size of 7000 square feet. This spacious bedroom apartment features a large living area, with cotemporary kitchen design and beautifully designed seven bathrooms. Garden Homes are villas with many themes featuring stunning water views and close proximity to entertainment options. Infrastructure for High-speed internet access with future technology-ready features, homes ready for state of the art cable TV and telephones, 24-hour water patrol, quality switches and outlets, ceiling height in bedroom to be approx. 2.8 m. Private garage for two cars, Remote control ready garage doors, individual swimming pool, water views and exclusive private beaches, Common Gardens and landscape maintained by the Palm, Private gardens with landscaping, Paves drive-in for homes.

The Village Center, conveniently located nearby, will be fully equipped with supermarkets, laundry, pharmacies, beauty parlors, barber salons, tailors and all other services required for daily living. Garden Homes, Palm Jumeirah is located approximately 30 minutes from Dubai International Airport and conveniently positioned for access to the Sheikh Zayed Road. From the driveway you are a convenient drive to the attractions Dubai attractions like the Madinat Souqs, The Burj Al Arab, Dubai Creek and the Gold Souq. It is only a 5 minutes drive to the impressive new Mall of the Emirates with its own Ski Centre and Snow.

- **Type** Villa
- **Status** Property Unavailable
- **Bedrooms** 5
- **Price** 10,000,000 AED
- **Area** 6,000 Sq. Ft.
- **Location** UAE » Dubai » The Palm Jumeirah » Garden Homes Palm Jumeirah

Contact Details:

- **Name** Provident Real Estate
- **Phone** +971-4-3233609
- **Fax** +971-4-3233608
- **Cell**
- **Address**

Property Features:

Main Features

- 24 Hours Concierge
- Balcony or Terrace
- Central Air-Con
- Central Heating
- Completion Year 2008
- Double Glazed Windows
- Electricity Backup
- Lobby in Building
- Other Main Features 24-hour water patrol.
- Parking Spaces
- View Stunning water views from all homes.
- Waste Disposal

Rooms

- Laundry Room

Business and Communication

- Broadband Internet
- Intercom
- Satellite/Cable TV

Healthcare and Recreation Facilities

- Barbeque Area
- Gym or Health Club
- Kids Play Area
- Lawn or Garden
- Swimming Pool

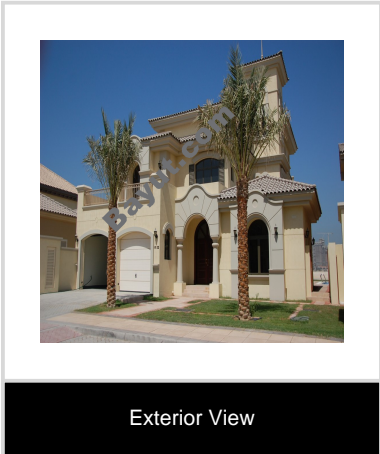
Healthcare and Recreation Facilities in Building

- Gym or Health Club

Other Facilities

- Maintenance Staff
- Other Facilities Beauty parlours, barber salons, tailors.
- Security Staff

Image Gallery:



For larger view click link below

http://www.bayut.com/uae_dubai_villas/garden_homes_palm_jumeirah_elegant_5_bedrooms_villa_for_sale-434912.html



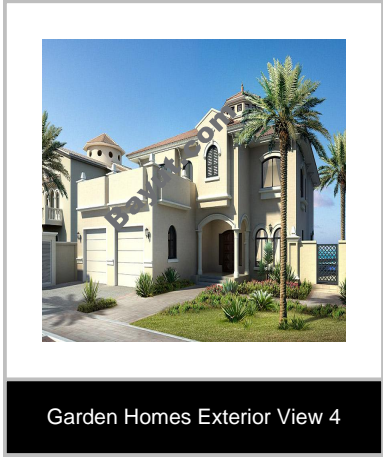
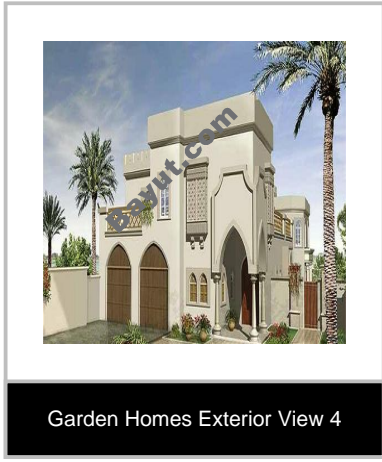
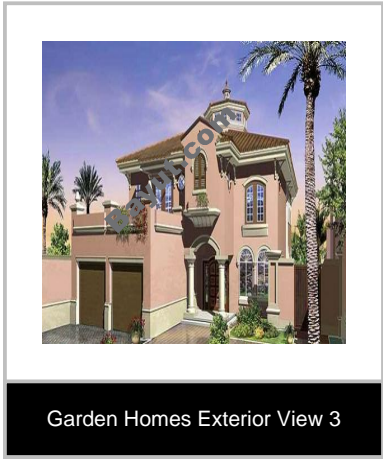
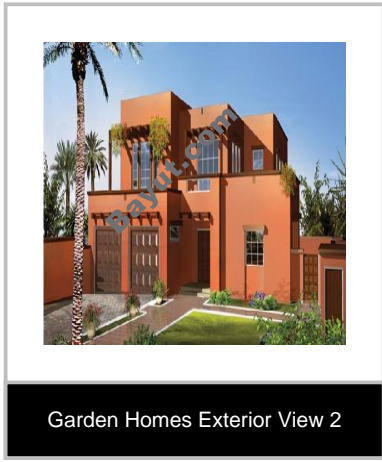
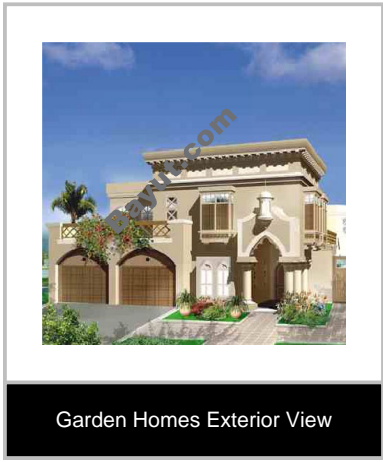
Information About Garden Homes Palm Jumeirah:



<div align="justify">Garden Homes are villas with many themes featuring stunning water views and close proximity to entertainment options. Infrastructure for High-speed internet access with "future technology-ready" features, Homes ready for state of the art cable TV and telephones, Homes ready for state of the art security systems, 24-hour water patrol, Quality switches and outlets, Ceiling height in bedroom to be approx. 2.8 m. Private garage for two cars, Remote control ready garage doors, Individual swimming pool, Water views and exclusive private beaches, Common Gardens and landscape maintained by the Palm, Private gardens with hardscaping and landscaping installed, Paves drive-in for homes. Marian clubhouse with pool, gymnasium available to Villa and Canal Cove Townhomes residents, Access to club for nominal fee. The Village Center, conveniently located near the Shoreline Apartments, will be fully equipped with supermarkets, laundry, pharmacies, beauty parlours, barber salons, tailors and all other services required for daily living.

Stunning water views from all homes, Homes designed by international architects with a choice of layouts and styles, Family living in a secure interior finishes, Walk in closets with wooden doors, Selected lighting throughout. Highest quality kitchen cabinetry, Selected granite tops, Ceramic tiles splash backs, Vitreous tiles, Twin bowl stainless steel sink with quality mixer tap, Spaces and services provided for all major appliances, Recessed lighting. Quality vanities with granite top, Ceramic tiled flooring and walls, Selected ceramics sanitary ware with accessories, Mirrors and vanity lighting in master bathroom, Safety glass shower enclosures, High quality mixer taps.</div>

➤ Garden Homes Palm Jumeirah Image Gallery:



For larger view click link below
http://www.bayut.com/uae_dubai_villas/garden_homes_palm_jumeirah_elegant_5_bedrooms_villa_for_sale-434912.html