

# Bayut.com

For all your property needs

B  
a  
y  
u  
t  
.c  
o  
m



## Table of Contents

Property Description .....	3
Contact Details .....	3
Property Features.....	4
Image Gallery .....	5
Development .....	6

## Property Description:



### 2 Beds Apartments

Tiara Residence Emerald Features this gem of an investment. Facing the sea, this property features 2 bedrooms with timber flooring, elegant wardrobes and en-suite facilities; fully equipped kitchen; high quality bathroom fixtures; large tinted picture windows, and; a balcony with wondrous views. Enjoy exceptional amenities and the finest restaurants, bars, gymnasium, sports facilities and one of the world's finest luxury spas within the perimeter. Contact Halcon Real Estate now for more precious details about this property for sale at Palm Jumeirah!

- **Type** Apartment
- **Status** Property Unavailable
- **Bedrooms** 2
- **Price** 3,000,000 AED
- **Area** 1,712 Sq. Ft.
- **Location** UAE » Dubai » The Palm Jumeirah » The Emerald Palace Residences

## Contact Details:

- **Name** Halcon Real Estate LLC
- **Phone** +971 4 3607422
- **Fax** +971 4 3619041
- **Cell**
- **Address**

## Property Features:

### Main Features

- 24 Hours Concierge
- Balcony or Terrace
- Central Air-Con
- Completion Year 2009
- Floors in Building 7
- Lobby in Building
- Other Main Features Restaurant, modern fitted kitchens, luxury en suite bathrooms, separate walk-in shower, squash court.
- Parking Spaces
- Waste Disposal

### Rooms

- Other Rooms Separate storage and maid room, guest cloakrooms, multipurpose tenant's room.

### Business and Communication

- Broadband Internet
- Intercom
- Satellite/Cable TV

### Healthcare and Recreation Facilities

- Jacuzzi
- Swimming Pool

### Healthcare and Recreation Facilities in Building

- Gym or Health Club

### Other Facilities

- Cafeteria or Canteen
- CCTV Security
- Other Facilities Safety systems with zoned alarms.
- Security Staff

Image Gallery:



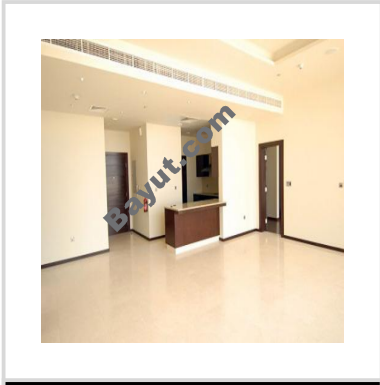
Emerald Palace Residences Exterior View



Floor Plan



Exterior View



Interior View



Interior View



Exterior View

For larger view click link below  
[http://www.bayut.com/uae\\_dubai\\_apartments/the\\_emerald\\_palace\\_residences\\_2\\_beds\\_apartment\\_for\\_sale-427603.html](http://www.bayut.com/uae_dubai_apartments/the_emerald_palace_residences_2_beds_apartment_for_sale-427603.html)

## Information About The Emerald Palace Residences:



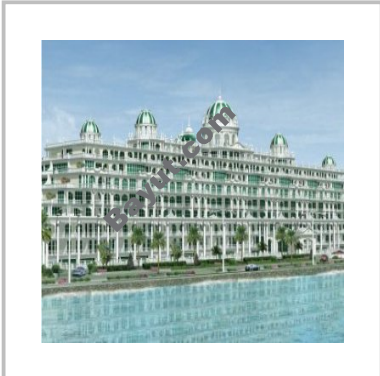
Classically styled, The Emerald Palace Residences incorporate elegant neoclassical architectural elements to create an imposing landmark dome. Bracing the skyline of Palm Jumeirah, the classical beauty of the Emerald Palace is suited to the sophisticated island life on the crescent of the Palm. This 7-storey development ranks as the showcase luxury residence of the island and is situated adjacent to the 5-star deluxe Emerald Palace Hotel and Resort. This residential complex offers the epitome of luxury at the edge of waterfront living. Enjoy the expansive views of the Persian Gulf and savor the unique and distinctive style of life on the Palm. Surrounded by lush green landscape, Emerald Palace Residences feature 200 apartments, intelligently designed to cater to connoisseurs of taste and luxury. Only the best modern amenities and select array of fine materials and fittings have been allowed to embrace the high-end 2 and 3 bedroom apartments. A few penthouse apartments have been allocated to enhance the experience at the Emerald Palace. All apartments feature spacious terraces that overlook a private beach and the far off horizon. Residents at the Emerald Palace will have access to the adjoining resort's aquamarine facilities. Expected completion date is September 2007. The Emerald Palace Residences feature first class services with futuristic and stunning public places that include an open plan reception and a majestic atrium. The complex is surrounded by lush green gardens that blend in with the natural beauty of the Palm. Some of the facilities offered at the Emerald Palace Residences include: Health complex with gymnasiums, Spa, Squash court, Multipurpose tenant's room, Lounge and viewing area, Temperature controlled swimming pools, Courtyard balconies for outdoor dining, Superior technology. TV and data systems, Modern fitted kitchens, Luxury en suite bathrooms, Separate walk-in showers, Guest cloakrooms, Separate storage and maid room, Underground parking, Adjoining retail facilities, Café/restaurant, Energy efficient air conditioning, CCTV intercom system, 24 hour security, Safety systems with zoned alarms, 24 hour concierge. Emerald Place Residences is located on the outer crescent of the Palm Jumeirah. It is the first project to be launched in the crescent of the island, which ranks as the eighth wonder of the

world. The Palm Jumeirah is located off the coast of Dubai and faces Burj Al Arab, the world's only 7-star luxury hotel. It is in close proximity to leading five-star hotels and resorts, the Dubai Marina, Dubai Internet and Media City and the Jebel Ali Free zone.</div>

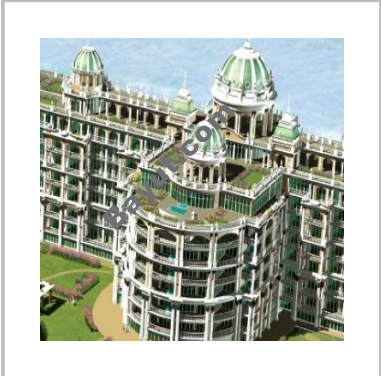
The Emerald Palace Residences Image Gallery:



Emerald Palace Residences Exterior View



Emerald Palace Residences Exterior View



Emerald Palace Residences Exterior View



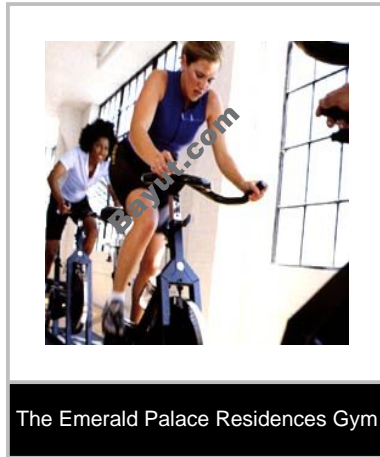
Emerald Palace Residences Exterior View



Emerald Palace Residences Interior View



Emerald Palace Residences Interior View



For larger view click link below

[http://www.bayut.com/uae\\_dubai\\_apartments/the\\_emerald\\_palace\\_residences\\_2\\_beds\\_apartment\\_for\\_sale-427603.html](http://www.bayut.com/uae_dubai_apartments/the_emerald_palace_residences_2_beds_apartment_for_sale-427603.html)