

Bayut.com

For all your property needs

B
a
y
u
t
.c
o
m



Table of Contents

Property Description	3
Contact Details	3
Property Features.....	4
Image Gallery	5
Development	7

Property Description:



971 Sq. Ft. Offices

Tiffany Tower has a self-contained office for sale overlooking the lake. Amenities include a business center, wireless meeting rooms, a food court, recreation deck with gym and spa, lakeside promenade, retail outlets on the ground floor, ample parking for visitors, and modern security and car rental services. Contact Halcon Real Estate now for more details about this commercial space at Jumeirah Lake Towers.

- **Type** Office
- **Status** Property Unavailable
- **Bedrooms** 0
- **Price** 849,625 AED
- **Area** 971 Sq. Ft.
- **Location** UAE » Dubai » Jumeirah Lake Towers » Tiffany Tower

Contact Details:

- **Name** Halcon Real Estate LLC
- **Phone** +971 4 3607422
- **Fax** +971 4 3619041
- **Cell**
- **Address**

Property Features:

Main Features

- 24 Hours Concierge
- Central Air-Con
- Lobby in Building
- Parking Spaces
- Waste Disposal

Business and Communication

- Broadband Internet
- Intercom
- Satellite/Cable TV

Image Gallery:



Tiffany Tower



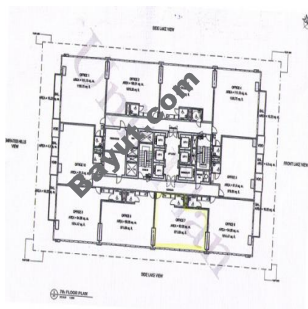
Interior View



Interior View



Location



Floor Plan



Tiffany Tower



Interior View



Interior View



Interior View

For larger view click link below

http://www.bayut.com/uae_dubai_offices/tiffany_tower_office_for_sale-427284.html

➤ Information About Tiffany Tower:



Tiffany Towers is an elegant 43-storey skyscraper at the entrance to the Jumeirah Lakes development that responds to the clients call for a 'unique and prestigious' office building. The 183 meter high-rise building has a simple rectangular plan with a central core. The structural 'spine' is expressed on the two shorter facades as twin white aluminum clad columns that branch outwards at complementary points just below the top of the building and above the podium. This rigid vertical element is juxtaposed against a gently curved outer 'skin' in the form of five elliptical hoops with interstitial glazing in a variety of colours. The 'body' metaphor can be further expounded and the two primary elements of structure and external wall. The graceful upward sweep of the outer layer is carried to an over-arching green glazed roof. Below this is located a staff restaurant which together with a gymnasium at the 30th level and a dedicated floor of guest suites offer commercial users a degree of self containment.



Tiffany Tower Image Gallery:



Tiffany Tower

For larger view click link below

http://www.bayut.com/uae_dubai_offices/tiffany_tower_office_for_sale-427284.html