

# Bayut.com

For all your property needs

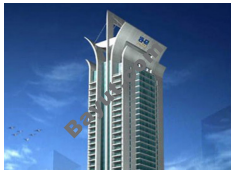
B  
a  
y  
u  
t  
.c  
o  
m



## Table of Contents

Property Description .....	3
Contact Details .....	3
Property Features.....	4
Image Gallery .....	5
Floorplans.....	6
Development .....	7

## Property Description:



### 2 Beds Apartments

Amazing 2 bedroom apartment is available for sale in Al Seef 2 at Jumeirah Lake Towers area. The apartment is situated on a low floor with picturesque view of the Lake. Offers 1600 square feet size and offered in superb condition, comprising of spacious bedroom with fitted wardrobes, beautiful kitchen, modern bathroom and good size living/dining room. This unit is currently rented until October 2011. Facilities at Al Seef 2 include sophisticated air-conditioning systems for efficient noiseless cooling, state-of-the-art fitness centre and Health Club with sauna, steam and Jacuzzi, car parks for every apartment, children&rsquo;s play area, Child Care Centre and Cafeteria. The building also offers 24-hour security with Closed Circuit TV and Security Cameras. Al Seef is located at the Jumeirah Lake Towers and situated in the most popular district of Dubai, it is close to top class golf courses including the Emirates Golf Course, Montgomery Gold Course as well as entertainment venues such as the Hard Rock cafe, and international restaurants and Hotels of nearby Jumeirah and The Palm Islands. American University in Dubai, Dubai internet and Media cities are just across the road and the Jebel Ali Free Zone is up the road.

- **Type** Apartment
- **Status** Property Unavailable
- **Bedrooms** 2
- **Price** 1,400,000 AED
- **Area** 1,602 Sq. Ft.
- **Location** UAE » Dubai » Jumeirah Lake Towers » Al Seef Tower 2

## Contact Details:

- **Name** Provident Estate - PEAW
- **Phone** 056 6577326 / 04-3233609
- **Fax** +971 4 3233609
- **Cell**
- **Address**

## Property Features:

### Main Features

- 24 Hours Concierge
- Balcony or Terrace
- Central Air-Con
- Central Heating
- Completion Year 2007
- Double Glazed Windows
- Electricity Backup
- Elevators in Building 6
- Floors in Building 40
- Lobby in Building
- Parking Spaces
- Waste Disposal

### Business and Communication

- Broadband Internet
- Intercom
- Satellite/Cable TV

### Healthcare and Recreation Facilities

- Jacuzzi
- Kids Play Area
- Sauna
- Steam Room
- Swimming Pool

### Healthcare and Recreation Facilities in Building

- Barbeque Area
- Gym or Health Club
- Jacuzzi
- Kids Play Area
- Sauna
- Steam Room
- Swimming Pool

### Other Facilities

- Cafeteria or Canteen
- CCTV Security
- Security Staff

Image Gallery:



Seef Tower 2



Exterior View

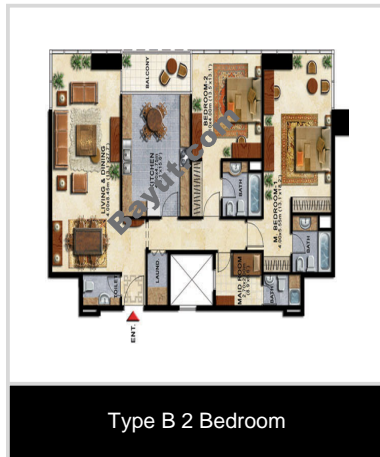


Exterior View

For larger view click link below

[http://www.bayut.com/uae\\_dubai\\_apartments/al\\_seef\\_tower\\_2\\_stunning\\_2\\_bedroom\\_in\\_jumeirah\\_lake\\_towers-414987.html](http://www.bayut.com/uae_dubai_apartments/al_seef_tower_2_stunning_2_bedroom_in_jumeirah_lake_towers-414987.html)

Floorplans:



For larger view click link below

[http://www.bayut.com/uae\\_dubai\\_apartments/al\\_seef\\_tower\\_2\\_stunning\\_2\\_bedroom\\_in\\_jumeirah\\_lake\\_towers-414987.html](http://www.bayut.com/uae_dubai_apartments/al_seef_tower_2_stunning_2_bedroom_in_jumeirah_lake_towers-414987.html)

## Information About Seef Tower 2:



With magnificent waterfront views, Seef II and Seef III Towers, comprising of 39 and 34 floors of two (2) and three (3) bedroom apartments respectively, as well as unparalleled luxurious penthouses, are icons in the heart of New Dubai. The two and three bedroom apartments range in size from 1,600 to over 2,700 square feet, while the penthouses spread over 5,200 square feet each - larger than most villas. Seef II and Seef III towers comprise of over 350 units and are located at the Jumeirah Lake Towers development. With Seef II and Seef III, DEYAAR has pushed the envelope and gone beyond the ordinary in design and lifestyle terms. Nothing was spared – expenses, design, finishing and facilities wise – to achieve a lifestyle that merges modern style with traditional family values. As freehold developments, and as a part of the distinctive, sophisticated and exciting living environment upcoming in Dubai’s increasingly cosmopolitan nature, the exclusive new towers comprise an eclectic mix of residential and retail outlets.

The scenic meandering waterways, lakeside promenades, manicured lawns and the family-oriented facilities make Seef II and Seef III Towers one of the top living environments in Dubai. The towers have a three-level basement parking facility, ample for every apartment, in addition to extensive retail facilities located at its base and an ultra modern health club, covering the full floor, situated on the top floor. The Jumeirah Lake Towers is located adjacent to the Sheikh Zayed Road between Interchange 5 and 6. The apartment high-rises lie in close proximity to other signature developments namely the Jumeirah Palm, Emirates Golf Course, the Gardens Mall, The Mall of the Emirates as well as the three main business hubs in Dubai, those being the Dubai Internet City, the Dubai Media City and the Jebel Ali Free Zone.



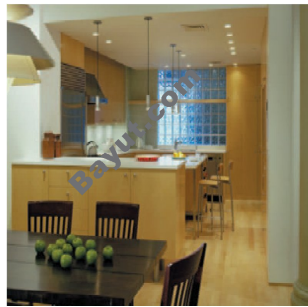
## Seef Tower 2 Image Gallery:



Seef Tower 2 Exterior View



Seef Tower 2 Exterior View2



Seef Tower 2 Interior View

For larger view click link below

[http://www.bayut.com/uae\\_dubai\\_apartments/al\\_seef\\_tower\\_2\\_stunning\\_2\\_bedroom\\_in\\_jumeirah\\_lake\\_towers-414987.html](http://www.bayut.com/uae_dubai_apartments/al_seef_tower_2_stunning_2_bedroom_in_jumeirah_lake_towers-414987.html)