

# Bayut.com

For all your property needs

B  
a  
y  
u  
t  
.c  
o  
m



## Table of Contents

Property Description .....	3
Contact Details .....	3
Property Features.....	4
Image Gallery .....	5
Development .....	6

► **Property Description:**



**2 Beds Apartments**

Well designed 2 bedroom apartment is available for sale. It is located in Limestone House, Dubai International Financial Centre and has an area of 1668 square feet. Contact us for further details.

- **Type** Apartment
- **Status** Expired
- **Bedrooms** 2
- **Price** 4,670,400 AED
- **Area** 1,668 Sq. Ft.
- **Location** UAE » Dubai » Dubai International Financial Centre » Limestone House

► **Contact Details:**

- **Name** Dandan
- **Phone**
- **Fax**
- **Cell**
- **Address**

## Property Features:

### Main Features

- 24 Hours Concierge
- Balcony or Terrace
- Central Air-Con
- Completion Year 2010
- Floors in Building 15
- Lobby in Building
- Parking Spaces
- Waste Disposal

### Business and Communication

- Broadband Internet
- Intercom
- Satellite/Cable TV

### Healthcare and Recreation Facilities

- Jacuzzi
- Steam Room

### Healthcare and Recreation Facilities in Building

- Gym or Health Club

Image Gallery:



Limestone House Exterior View 2

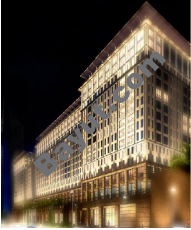


Limestone House Exterior View 1

For larger view click link below

[http://www.bayut.com/uae\\_dubai\\_apartments/limestone\\_house\\_2\\_b\\_r\\_apartment\\_for\\_sale-370116.html](http://www.bayut.com/uae_dubai_apartments/limestone_house_2_b_r_apartment_for_sale-370116.html)

## Information About Limestone House:



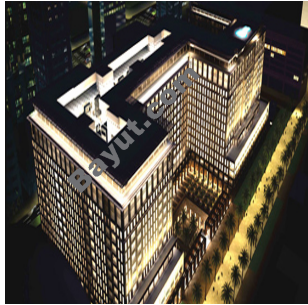
Every great city boasts an address that becomes a natural desire. Limestone House will be that address in Dubai. Limestone House is the creation of a vision to construct prominence and to design an incomparable standard of living focusing on opulence, style and traditional luxury. Comprising exceptionally lavish and spacious one, two, three and four bedroom apartments, most overlooking the elegant street style courtyard, whilst also providing delightful views across DIFC and its environs. Limestone House personifies aristocratic luxury for the elite. Limestone House, Dubai's exemplary new apartment building offering exceptional living space and amenities, utilises the finest architects, designers and project managers, befitting of a development of this stature. Taking pride of place in a commanding position adjacent to the Gate Precinct within the Gate Boulevard District of DIFC, Limestone House exudes an aura of respectability where utmost privacy is paramount.

Featuring an impressive blend of architectural styles influenced by ancient Arabia, Limestone House is a glorious representation of highly distinguished, luxurious living for the elite few, through the inclusion of the very finest exquisitely considered marble and timber finishes. This unique residence has been designed to the time-honoured specifications of the master stonemason, with window length, breadth and height determined by the traditional dimensions of masonry blocks. For those who demand the finest, no other development in the region surpasses Limestone House for extravagance, distinction and splendour. Imagine arriving home having crossed the tranquil courtyard, entering a plush lobby and then the elevator, which ascends to a private hallway for your apartment. Great care has been taken to ensure the space within each home exudes classic style and functionality. Luxuriant architecture meets exquisite craftsmanship and can be seen from the timber flooring to the mosaic tiles in the bathroom and the fully fitted elegant yet functional kitchen, with an exacting eye for detail.

The apartments are designed with a discerning buyer in mind. The result is a peerless residential concept where every facet reflects unsurpassed excellence and the upper limits of refinement. Warm, welcoming and well appointed: Limestone House affords residents the privilege of

coming home to a five-star address where preferences are considered, requirements anticipated and privacy respected. This haven of refined elegance within DIFC, is centrally located with direct access to Dubai's main arterial highway, providing ease of travel to major hubs such as: Dubai International Airport, Jebel Ali Free Zone, Dubai Internet City and Dubai Media City. World-class shopping malls and pristine beaches are also just a short distance away. The amenities at Limestone House will exceed all expectations, from complete concierge facilities to health and wellness offerings including an indoor lap pool, fully equipped fitness centre, jacuzzi and separate male and female changing facilities with steam rooms in each. A tranquil, private terrace with a sunken garden provides a natural environment in which to relax. Limestone House is located in a commanding position within Dubai International Financial Centre (DIFC).

➤ **Limestone House Image Gallery:**



Limestone House Exterior View 1



Limestone House Exterior View 2



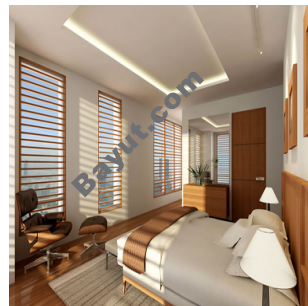
Limestone House Kitchen



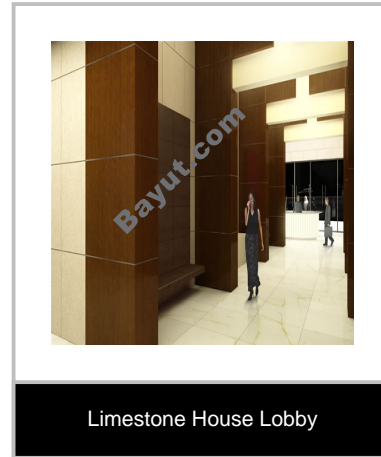
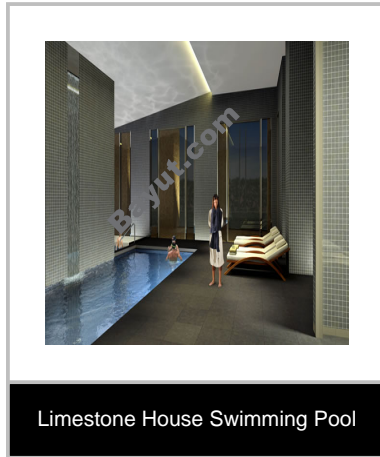
Limestone House Drawing Room



Limestone House Reception



Limestone House Bedroom



For larger view click link below

[http://www.bayut.com/uae\\_dubai\\_apartments/limestone\\_house\\_2\\_b\\_r\\_apartment\\_for\\_sale-370116.html](http://www.bayut.com/uae_dubai_apartments/limestone_house_2_b_r_apartment_for_sale-370116.html)