

Bayut.com

For all your property needs

B
a
y
u
t
.c
o
m



Table of Contents

Property Description	3
Contact Details	3
Property Features.....	4
Image Gallery	5
Floorplans.....	6
Development	7

Property Description:



2 Beds Apartments

Well designed 2 bedroom apartment is available for sale. It is situated on the 4th floor of Emirates Garden in Jumeirah Village South. Its area is 1597 square feet and has an excellent garden view. Contact us for further details.

- **Type** Apartment
- **Status** Expired
- **Bedrooms** 2
- **Price** 2,013,100 AED
- **Area** 1,597 Sq. Ft.
- **Location** UAE » Dubai » Jumeirah Village South » Emirates Garden

Contact Details:

- **Name** Ishfaq Naseem
- **Phone** 971-50-7264852
- **Fax** +971 4 2717721
- **Cell**
- **Address**

Property Features:

Main Features

- 24 Hours Concierge
- Balcony or Terrace
- Central Air-Con
- Floor 4
- Floors in Building 5
- Lobby in Building
- Parking Spaces
- View Garden view
- Waste Disposal

Business and Communication

- Broadband Internet
- Intercom
- Satellite/Cable TV

Healthcare and Recreation Facilities

- Swimming Pool

Healthcare and Recreation Facilities in Building

- First Aid Medical Center
- Gym or Health Club

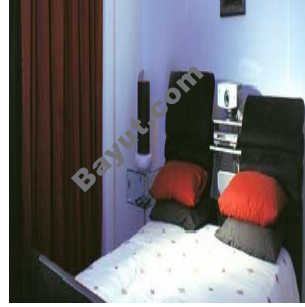
Other Facilities

- Security Staff

► Image Gallery:



Emirates Garden Exterior View

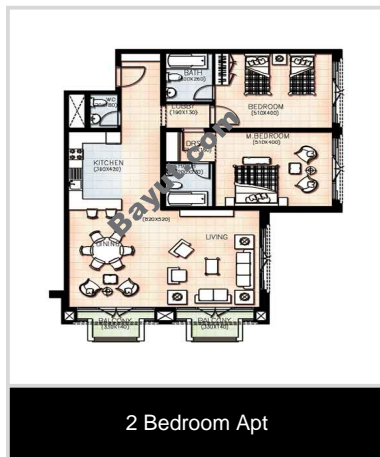


Emirates Garden Bedroom

For larger view click link below

http://www.bayut.com/uae_dubai_apartments/emirates_garden_elegant_2_bedroom_apartment_for_sale-360702.html

Floorplans:



For larger view click link below

http://www.bayut.com/uae_dubai_apartments/emirates_garden_elegant_2_bedroom_apartment_for_sale-360702.html

Information About Emirates Garden:



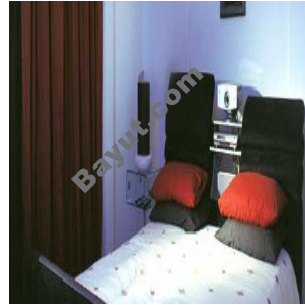
The unique facade of Emirates Gardens catches the eye, miles away! The beautiful development (Two buildings together form a development) is a delightful combination of 3 buildings. Gardenia, Lavender and Rose, each ground plus four storeys. Exquisitely punctuating the landscape with refined style and elegance. Each development would have Retail & Restaurants on ground level alongside the street. Waterway System-Running through the community is a waterway system with walkways that not only connect the community but also provides an alternative pedestrian system and enhances the retail and residential developments that line its bank. Enter the well-appointed chambers of your very own kingdom. In Mediterranean or Arabic-themed architectural style. Where every detail tells care and every furnishing spell class. Choose from a selection of spacious 1 & 2 balconies & terraces to enjoy the lush landscaping and scenery. An exotic ambience that wraps you and your family with the warmth of home. Emirates Gardens homeowners can enjoy a host of privileges. Like a state-of-the-art health club and swimming pool, to name a few. Residents of Jumeirah Village can enjoy a tranquil and thrilling lifestyle with extensive range of leisure facilities. Central Park- a gently sloping hill that rises above the surrounding land to provide a perfect location for the iconic Sunrise Viewing Pavilion. Car parking for every apartment and retail store, neighborhood parks, walking, jogging & cycling trails, medical facilities, round the clock security, town and country clubs.



Emirates Garden Image Gallery:



Emirates Garden Exterior View



Emirates Garden Bedroom

For larger view click link below

http://www.bayut.com/uae_dubai_apartments/emirates_garden_elegant_2_bedroom_apartment_for_sale-360702.html