

Bayut.com

For all your property needs

B
a
y
u
t
.c
o
m



Table of Contents

Property Description	3
Contact Details	3
Property Features.....	4
Floorplans.....	5
Development	6

Property Description:



2 Beds Apartments

Two bedroom apartment on the 3rd floor of Shakespeare tower in living legends, Dubailand is available for sale. This apartment has an area of 1416 square feet.

- **Type** Apartment
- **Status** Expired
- **Bedrooms** 2
- **Price** 1,343,784 AED
- **Area** 1,416 Sq. Ft.
- **Location** UAE » Dubai » Dubai Land » Shakespeare Tower

Contact Details:

- **Name** Rizwaan
- **Phone** +971 50 105 2030
- **Fax**
- **Cell**
- **Address**

Property Features:

Main Features

- 24 Hours Concierge
- Central Air-Con
- Completion Year 2013
- Lobby in Building
- Parking Spaces
- Waste Disposal

Business and Communication

- Broadband Internet
- Intercom
- Satellite/Cable TV

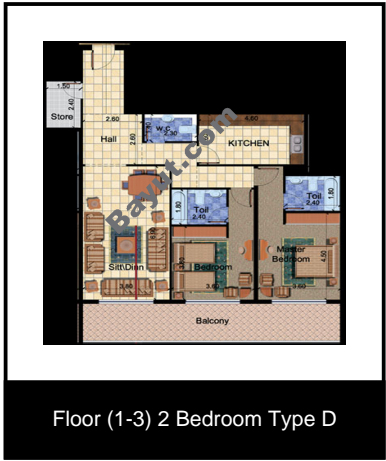
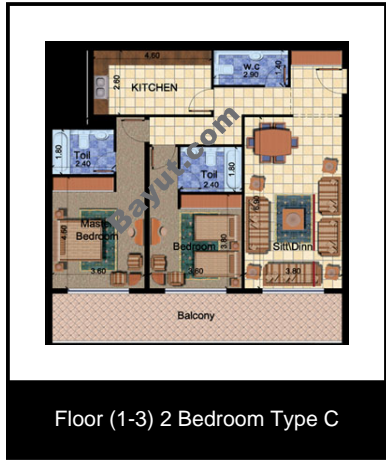
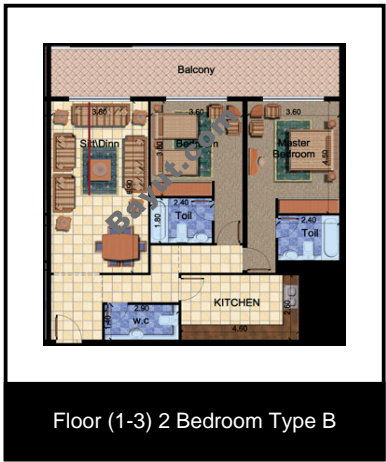
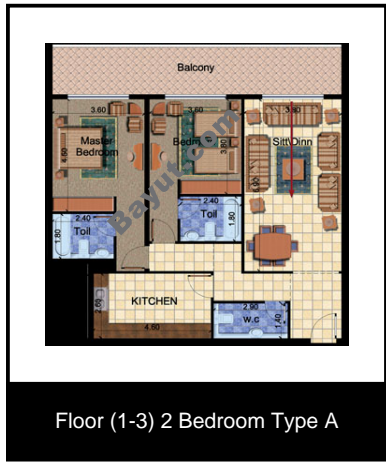
Healthcare and Recreation Facilities

- Other Facilities Sports center for women.

Healthcare and Recreation Facilities in Building

- Gym or Health Club

Floorplans:



For larger view click link below
http://www.bayut.com/uae_dubai_apartments/shakespeare_tower_stylish_two_bedroom_apartment_for_sale-359801.html

Information About Shakespeare Tower:



History is rich with Arabian and global legends, momentous stories and incredible experiences. The future will be a place of the fantastic and of fantasy. At Legends, we celebrate the past and imagine historical moments yet to come. We are building the future of history - a destination of experiences and entertainment, a place to live and work - the new home of family fun in a city of global significance. Leading architects, designers and consultants have created the plan for Legends. Innovative space planning, weather protection and visitor flow analysis have ensured that Legends will provide 'year round' entertainment to families and friends from all over the world. Legends of Nature draws on the forces of our natural world and the wonder of our co-inhabitants of this planet to create a venue of incredible power. Visitors will be taken on safaris set in prehistoric times when tyrannosaurus ruled the land and earth was a dangerous place. Other journeys re-create the intensity of an Amazonian flood and take visitors to the edge of the Victoria Falls.

Legends of Nature takes us closer to a natural world, which overflows with intensity and sensation. Legends of the World is inspired by people and places from this planet and beyond. It will awe and inspire through its journeys of extraordinary fact and fantastic fiction. Voyages of exploration will excite and inform with incredible reality and through rides of epic discovery. The Legends Leisure Complex is the sparkling hub through which all visitors will walk, sail or ride en-route to one of the three theme parks. Entertainment, specialty shops, themed restaurants and cafés line its curved boulevards to create a vibrant focus at the center of the resort. Designed as a pivotal link, the Legends Leisure Complex is a commercial opportunity of huge potential. Legends of Arabia is a world-class theme park destination, which will showcase a wide range of the newest, first-time rides and attractions in the region.

The theme park will be the first to be housed in a climate controlled environment through a centerpiece designed tent that will cover almost 60% of the theme park grounds. Legends of Arabia bring together the fantasies and fables of an ancient world. Tales of the City, Tales of the Sea, Tales of the Desert, Tales of Adventure & Travel, Tales of the Future, all promise an

unrivalled rollercoaster ride through a magical era. A fun family place that's full of exhilarating experiences. Dubai is famed as a golfing destination and Legends will further define its position as a center of golfing excellence. Legends will take the nine best holes from around the world and combine them in one golfing experience the result is a legendary course - Golfing Legends. In addition to: Towers and commercial buildings, Villas and residential towers, Themed Hotels. This project's location in Dubai will complete Dubai 's architectural landscape with its intricately designed buildings and fine finishing. The combination of the old and new in the structure of Legends will create a certain harmony between today's modern architecture and history's classic styles and designs, mixing cultures, fables, and technology.

Living Legends will be nothing less than a marvel of what man can achieve today, attracting numerous tourists and Dubai residents alike. Living Legends will provide its visitors with entertainment, relaxation, comfort, and beauty across all fronts, from golf courses, to theme parks and themed hotels with the highest living standards and services with no end. Innovative apartments in signature buildings of spellbinding beauty and magical properties. There are 12 towers in total, comprising residential spaces of various surface areas namely; Aladdin Tower, Sindbad Tower, Ali Baba Tower, Cleopatra Tower, Hercules Tower, Caesar Tower, Queen Sheba Tower, Napoleon Tower, Snow White Tower, Cinderella Tower, Rapunzel Tower and Shakespeare Tower. Each tower has it's own private swimming pool, a men's gym and a sports center for women. Private parking spots are available for each apartment in addition to a three floor shopping complex catering to the group of towers surrounding it. Strategically located within Dubailand the Legends is spread over a 24.7 million sq/ft plot and offers community living at it best. This 3.8 billion mixed-use mega entertainment project is 30 minutes away from Dubai International Airport.</div>



Shakespeare Tower Image Gallery:



Shakespeare Tower Exterior View



Shakespeare Tower Exterior View 2

For larger view click link below

http://www.bayut.com/uae_dubai_apartments/shakespeare_tower_stylish_two_bedroom_apartment_for_sale-359801.html